

Sarah Lawrence College

DigitalCommons@SarahLawrence

Complete protest and activism collection online

Protest and Activism Collection

4-8-2004

[Teach-In on Racism, Bias and Exclusion Schedule Poster, April 8, 2004]

[Unknown]

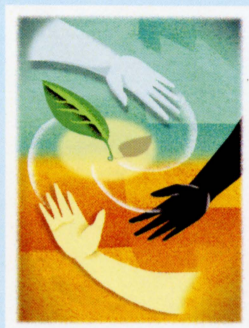
Follow this and additional works at: <https://digitalcommons.slc.edu/protest>

Recommended Citation

[Unknown], "[Teach-In on Racism, Bias and Exclusion Schedule Poster, April 8, 2004]" (2004). *Complete protest and activism collection online*, Sarah Lawrence College Archives. 92.
<https://digitalcommons.slc.edu/protest/92>

This Book is brought to you for free and open access by the Protest and Activism Collection at DigitalCommons@SarahLawrence. It has been accepted for inclusion in Complete protest and activism collection online by an authorized administrator of DigitalCommons@SarahLawrence. For more information, please contact alester@sarahlawrence.edu.

TEACH-IN ON RACISM, BIAS *and* EXCLUSION



THURSDAY, APRIL 8, 2004

*All classes are cancelled for this important event.
Students, Faculty and Staff are strongly encouraged to attend.
All food services, the Library and the Campbell Sports Center
will be closed from 10:00 a.m. - 4:00 p.m.*



10:00 a.m.-10:30 a.m. Convocation

Westlands North Lawn (if raining, Reisinger Concert Hall)

Featuring President Michele Myers, students Corey Walker and Erin Carter, and faculty member Ray Clarke.

10:45 a.m.-12:30 p.m. Workshops

See listing of workshops to side of this poster.

Please visit www.slc.edu/teach_in for complete list of workshops, descriptions and locations.

12:30 p.m.-1:30 p.m. Lunch: Time to Reflect and Talk

4 Locations on Westlands North Lawn (Bates Cafeteria if raining)

Box lunches will be served in this location only - no food services available.

During lunch, we will erect the *Wall of Division* on the North Lawn.

Throughout the Afternoon - Westlands North Lawn

Words can wound. But often we fail to recognize their effects without concrete examples.

The SLC community is invited to contribute stories of how words have wounded to a Wall of Division, which will be erected on the North Lawn. At the end of the day the entire community will join together in taking the wall down, as a way of rejecting the division and discord that it represents.

This event is sponsored by the students in Dr. Rodenbeck's course, "Representing: Art as Political Speech"

1:45 p.m.-3:00 p.m. Small Group Discussions: "Where Do We Go from Here?"

We will use this time to talk about concrete suggestions for things we can do to improve the situation on campus. Each group will be chaired by a faculty member working with a student facilitator. A recorder will take notes so that the suggestions can be combined into a document for further discussion and action.

Participants will be assigned to these groups through a grab bag when they pick up their box lunch.

3:15 p.m.-4:30 p.m. Visions for the Future

Westlands North Lawn (if raining, Reisinger Concert Hall)

We invite faculty, students, and staff to talk about their hopes for the future, their vision of what Sarah Lawrence can and should be. This event will be moderated by [REDACTED] and [REDACTED] (student members of General Committee) and [REDACTED] (staff representative to General Committee) Priscilla Murolo of the history faculty will speak. There will be an open mic.

Dinner Break

All food service areas re-open at 4:00 p.m. for normal hours of operation

Evening Activities

Film Series on Racism, Bias and Exclusion in the Film Viewing Room

6:00 p.m. - 8:00 p.m. **Higher Learning** (1995, 127 min.), a film by John Singleton.

8:00 p.m. - 9:00 p.m. Discussion of **Higher Learning** led by
Damani Baker, LaShonda Barnett and Malcolm Turvey.

9:00 p.m. - 10:30 p.m. **The Negro's Dark or The Negroes Dark**, a film by SLC student Corey Walker.

10:30 p.m. - 12:00 a.m. **Bamboozled** (2000, 135 min.), a film by Spike Lee.

Poetry Reading - 8:00 p.m. in Titsworth Lecture Hall

featuring Sarah Lawrence Poets Jade Poster and Chris Jackson;
student poets from Duke Ellington High; and also featuring Matt Cook, Rives, and Kenny Carroll.

There may be other events scheduled. Please check the web site at www.slc.edu/teach_in for up to date listings.